

# Simple/Reliable/Green/Efficient

TIME:01-12M

## IOT DATA COCKPIT

INTERNET OF THINGS MANAGEMENT SYSTEM



## IoT MANAGEMENT SYSTEM

Big Herdsman provides professional intelligent hardware and software services to achieve unified decision-making management of pig farm environment control, smart feeding, biosecurity, and ecological protection, aiding the digital transformation of farming enterprises.



WEBSITE

[bigherdsman@bigherdsman.com](mailto:bigherdsman@bigherdsman.com)

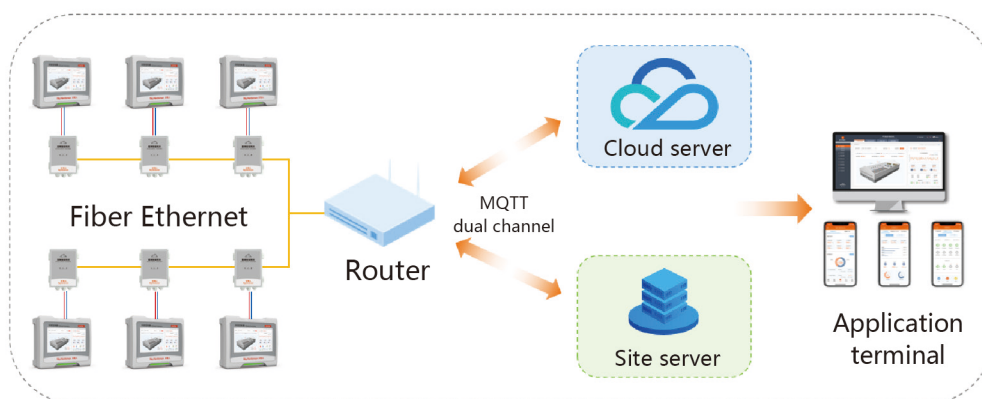


**BIGHERDSMAN**

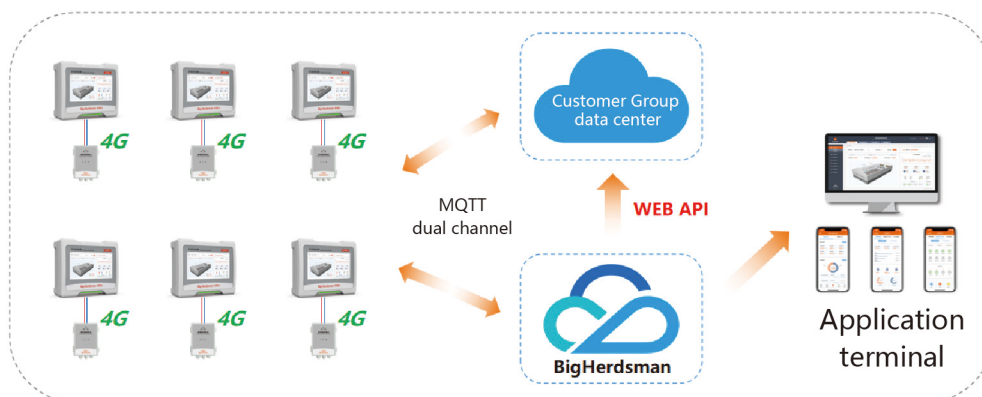
*PIG PRODUCTION*

## Features

- **Comprehensive Compatibility:** Supports Big Herdsman series control devices, including environmental controllers, centralized alarms, smart alarms, silo weighing systems, high-pressure cleaning systems, smart water meters, smart power meters, and more.
- **Real-Time Monitoring:** Data is transmitted in real-time, monitoring farming environments and equipment operation status, with visual data displays that quickly capture abnormalities for quickly alerts.
- **Data Management:** Long-term data storage, multi-dimensional data analysis, and historical tracing capabilities.
- **Remote Operation:** Remote parameter setting reduces personnel movement and enhances epidemic prevention capabilities.
- **Secondary Exploitation:** Provides professional hardware and software data interfaces to support secondary data exploitation.
- **Dual-System Architecture:** Supports dual-channel data transmission, with synchronized cloud and local systems for stable and reliable operation.
- **Access Management:** Multi-level management design allows flexible allocation of user and role access.
- **Multi-Terminal Support:** Single account login on multiple devices, including phones, tablets, and computers.
- **High-Efficiency Transmission:** Combines fibre optic Ethernet and 4G wireless architecture, offering strong anti-interference capability and stable data transmission.



**Fiber Ethernet architecture**



**4G wireless architecture**

## BIG HERDSMAN MACHINERY(JIAOZHOU) CO.,LTD

Add: Shangde Avenue and Huanghe Road Intersection, Jiaozhou Economic and Technological Development Zone, Qingdao City, Shandong Province, China  
Tel: +86-532-6696 2297 / +86-532-5850 3988  
Website: [www.bigherdsman.com](http://www.bigherdsman.com)



SCAN QR CODE ON WECHAT