

Simple/Reliable/Green/Efficient

大牧人
Big Herdsman

LIGHTING SYSTEM

The lighting system includes a variety of lighting solutions such as light bulbs, fluorescent tubes, and dimmers under both AC and DC voltages, which is suitable for multiple breeding scenarios.

This lighting system is suitable for broiler and duck breeding, and optimizes livestock growth, age of sexual maturity, egg weight and egg production in various environments by accurately adjusting the brightness of the lamp.



WEBSITE

✉ bigherdsman@bigherdsman.com



BIGHERDSMAN

POULTRY PRODUCTION

Features Of Intelligent Dimmer

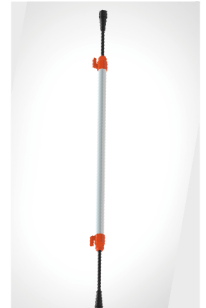


- Display screen: 7" capacitive touch screen, which is easy to operate and use, and visible.
- AC 220V, 50Hz/60Hz power supply, and DC 0-50V adjustable and settable output.
- External control, manual control and age-in-day control supported.
- Brightness change delay control (adjustable delay time) supported.
- Chinese-English-Russian language switching supported.
- It has emergency function, can start forced output through emergency switch, and mechanical dimming.
- It supports the switching of two-color lights.

DC Dimmable Fluorescent Tube

- DC 48V 8W, color temperature of 3000K, without stroboscopic effect, safe and reliable.
- High durability, PC material, IP67. Lifespan $\geq 50,000$ hrs, light decay within 3 years $\leq 10\%$.
- Uniform lighting, Unique internal circuit design solves voltage drop issue in chicken coops for more even brightness.
- It can achieve the switching between warm and blue colors.

TUBE LENGTH: 1.4M;



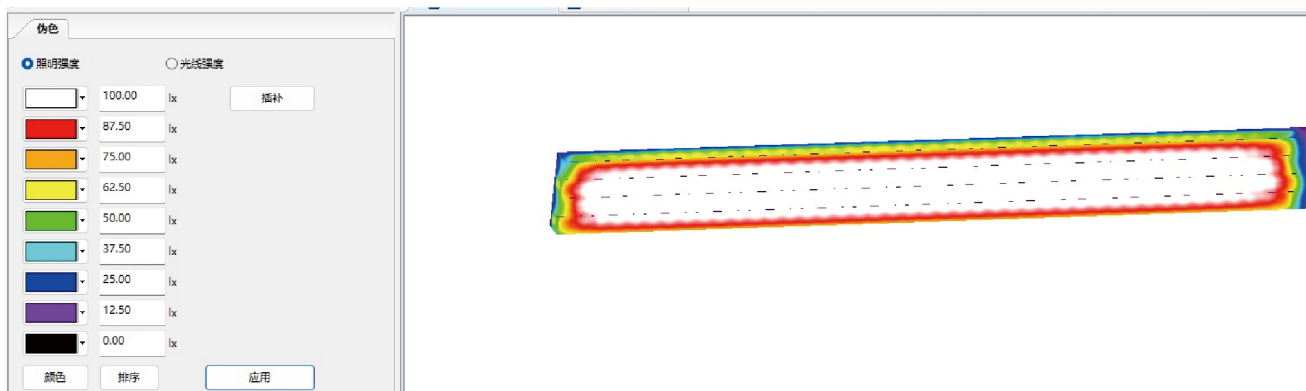
TOTAL LENGTH: 2.75M;

DIAMETER (Φ): 20MM;

Scheme Design



Illuminance simulation



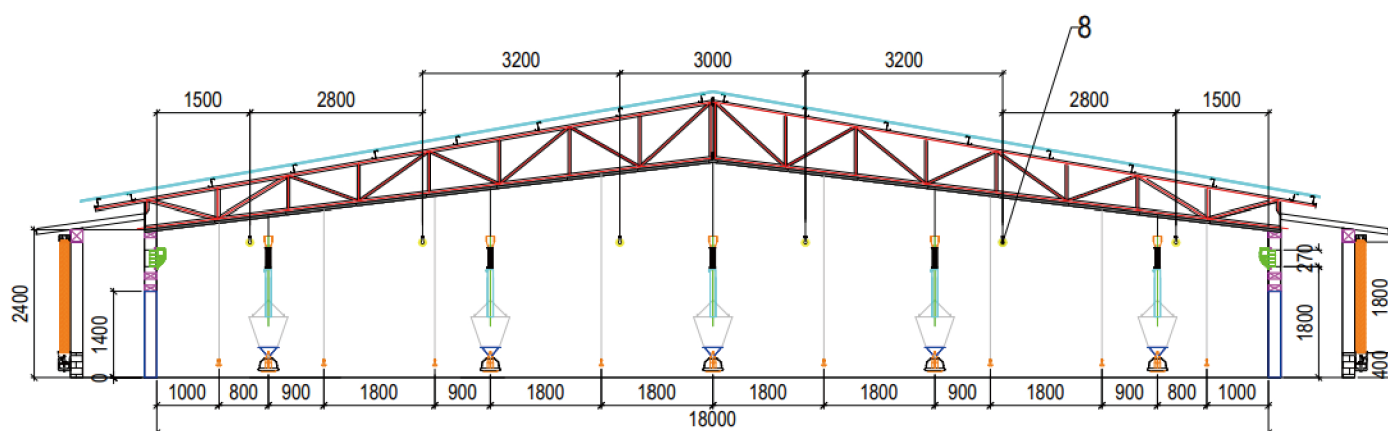
- The average illuminance reaches 100 lux.

AC Dimmable Light Bulb

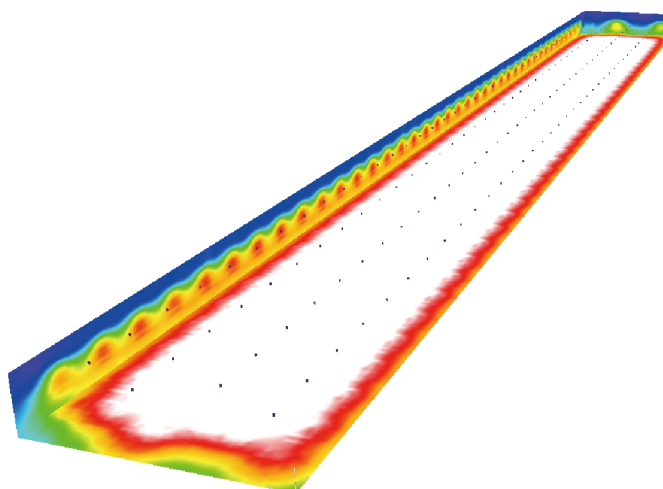
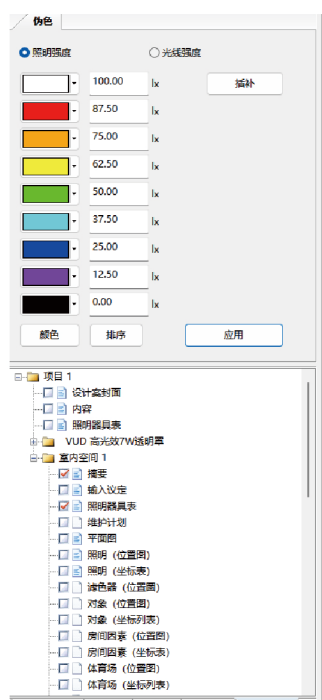
- AC220V 10W, 3000K color temperature, no stroboscopic, high luminous efficiency.
- Highly durable, with high heat dissipation materials, IP67. Lifespan $\geq 50,000$ hrs, light decay within 3 years $\leq 10\%$.
- Uniform lighting, high light transmittance, broader illumination, no pressure drop at both ends.
- Color temperature and power customizable.



Scheme Design



Illuminance simulation



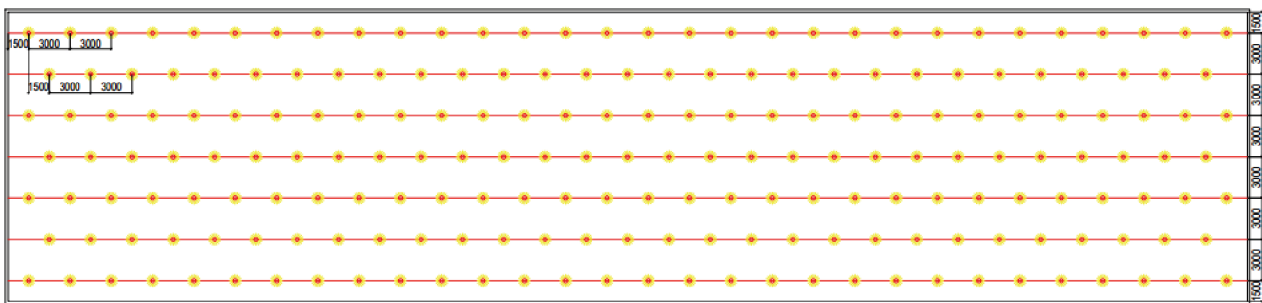
- The average illuminance reaches 100 lux.

DC Dimmable Light Bulb

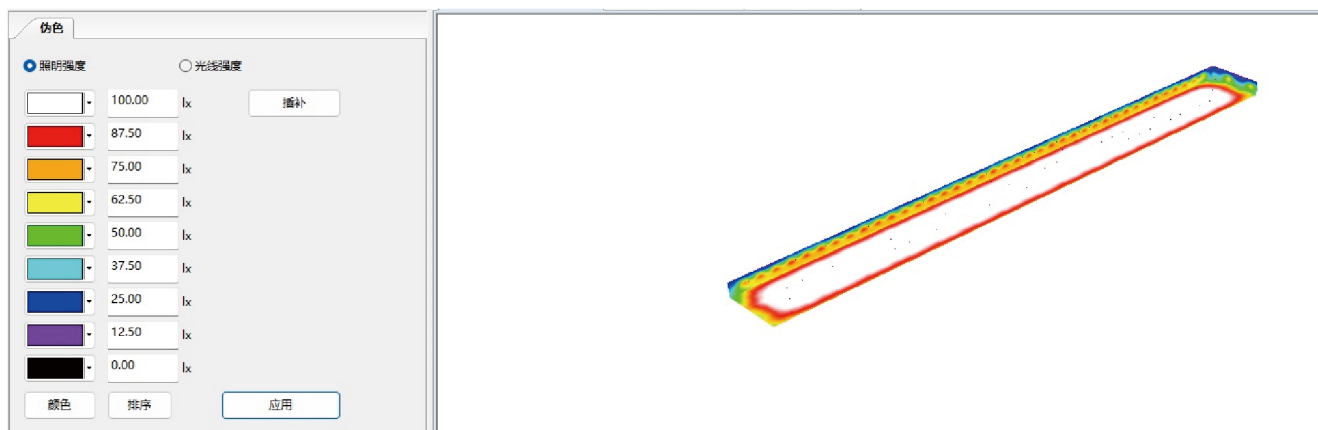
- DC 48V 9W, color temperature of 3000K, without stroboscopic effect, safe and reliable.
- High durability, PC + diecast aluminum, IP67, Lifespan $\geq 50,000$ hrs, light decay within 3 years $\leq 10\%$.
- Uniform lighting, Unique internal circuit design solves voltage drop issue in chicken coops for more even brightness.
- It can achieve the switching between warm and blue colors.



Scheme Design



Illuminance simulation



- The average illuminance reaches 100 lux.

QINGDAO BIG HERDSMAN MACHINERY CO.,LTD

Add: Yuehe road, Konggang industrial park, Qingdao city,
Shandong Province, PR China

Tel: +86-532-8493 3988

Website: www.bigherdsman.com



SCAN QR CODE ON WECHAT